

OPUS STONE

OPUS STONE

Collezione dalle caratteristiche tradizionali
ma essenzialmente sobrie, che conferiscono
agli ambienti uno stile trasversale senza tempo.
Nuance stonalizzate, che si abbinano perfettamente
alle linee moderne degli arredi per ambienti
s sofisticati e accoglienti.
Opus Stone, unico nel suo genere.



AVORIO



pavimento
Composizione
Avorio

rivestimento
Avorio 20,3x20,3

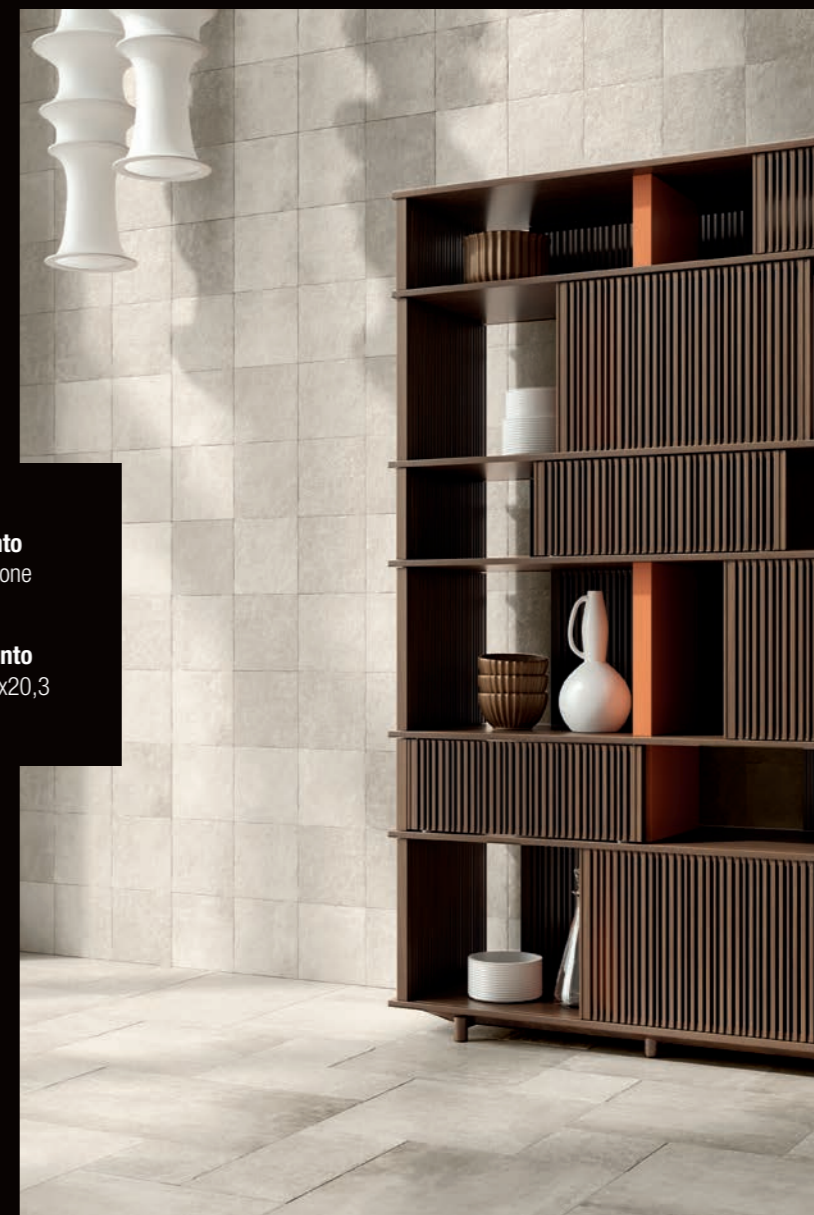




AVORIO

pavimento
Composizione
Avorio

rivestimento
Avorio 20,3x20,3



GRIGIO



pavimento
Grigio 20,3x20,3

rivestimento
Mosaico Grigio 5x5
Decoro Grigio / Avorio
20,3x20,3





pavimento
Grigio 20,3x20,3

rivestimento
Mosaico Grigio 5x5
Decoro Grigio / Avorio
20,3x20,3



BEIGE



pavimento
Composizione
Beige





pavimento
Composizione
Beige



TORTORA



pavimento
Composizione
Tortora

rivestimento
Decoro Beige / Tortora
20,3x20,3

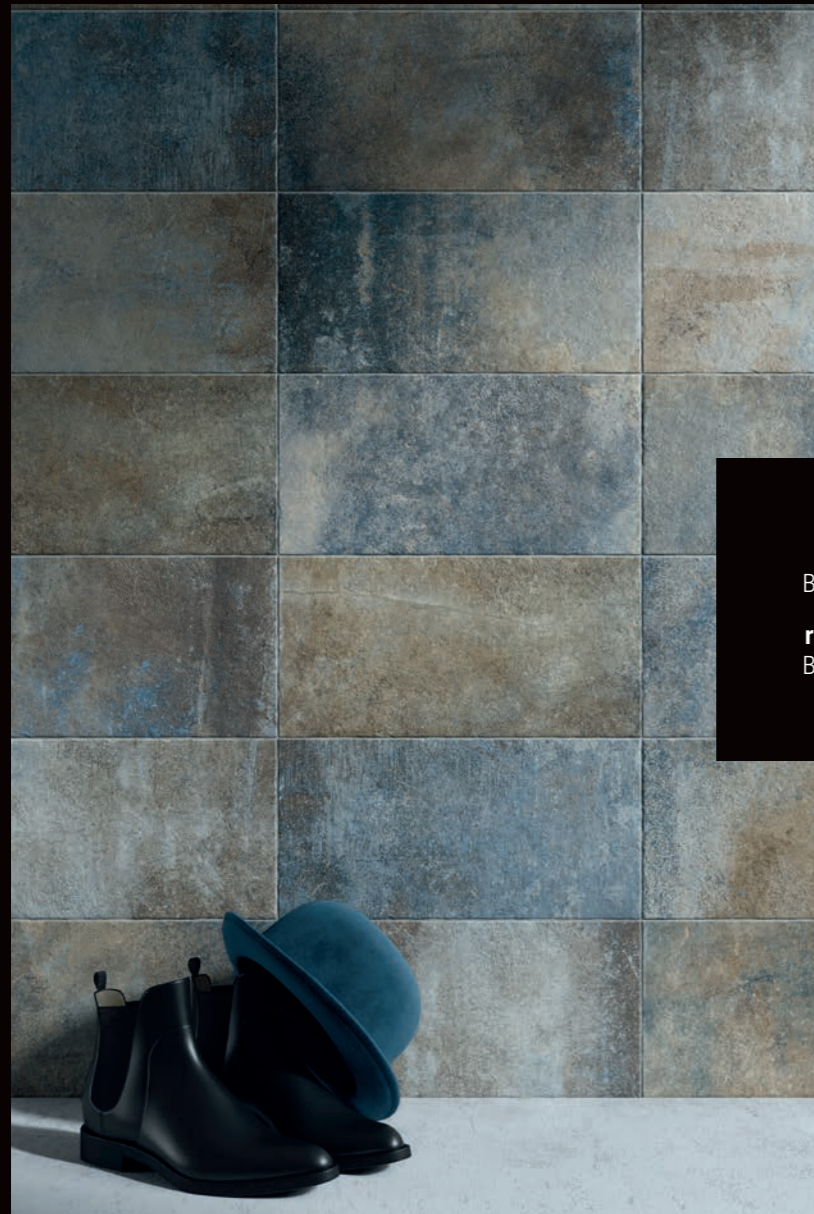




pavimento
Composizione
Tortora

rivestimento
Decoro Beige / Tortora
20,3x20,3





pavimento
Blu 40,8x61,4

rivestimento
Blu 20,3x40,8



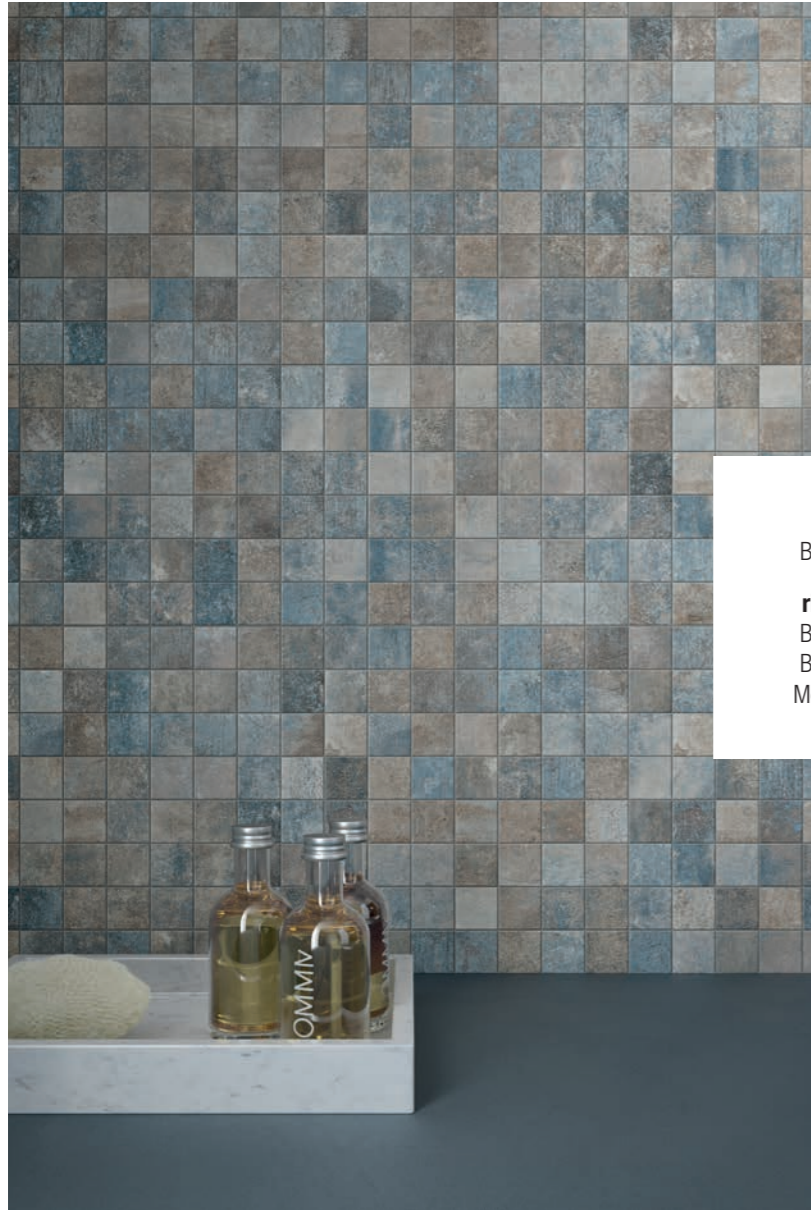


pavimento
Blu 40,8x61,4

rivestimento
Blu 20,3x40,8



BLU



pavimento
Blu 40,8x40,8

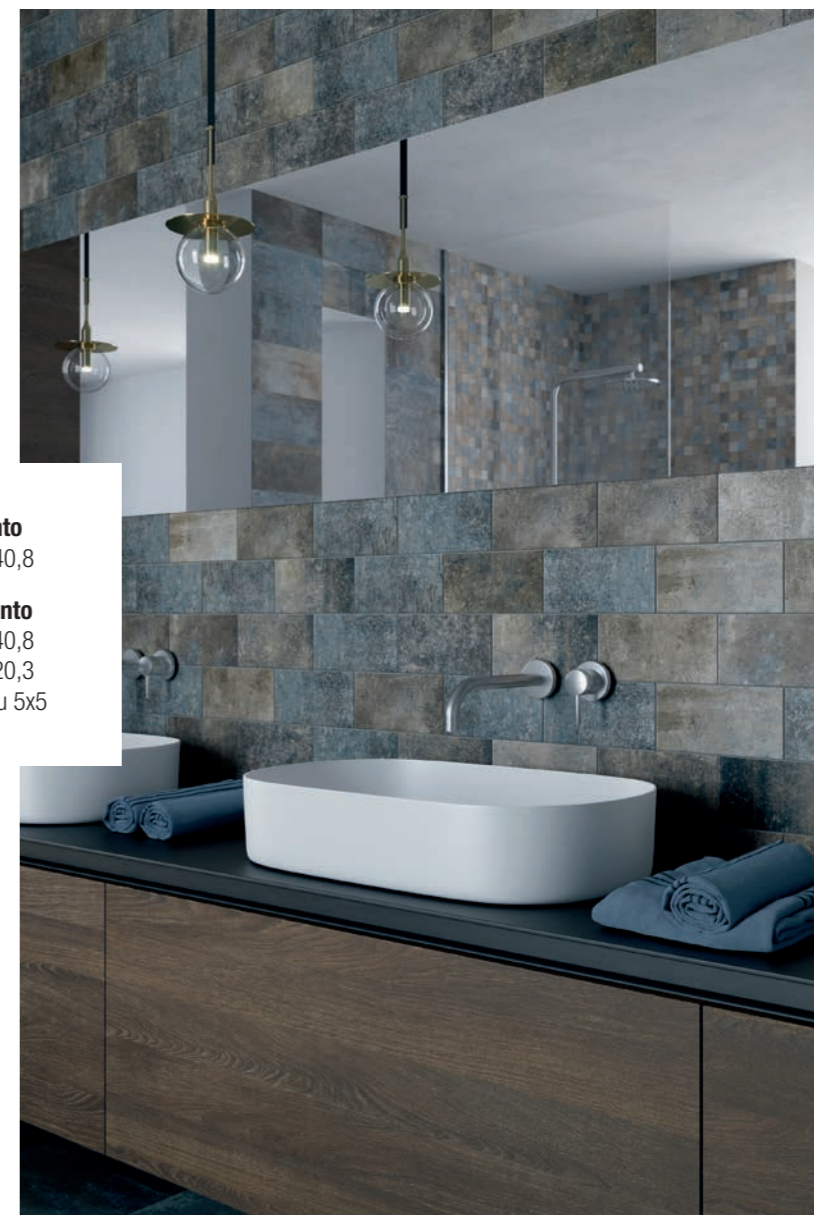
rivestimento
Blu 20,3x40,8
Blu 10,3x20,3
Mosaico Blu 5x5





pavimento
Blu 40,8x40,8

rivestimento
Blu 20,3x40,8
Blu 10,3x20,3
Mosaico Blu 5x5



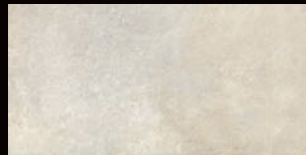
AVORIO



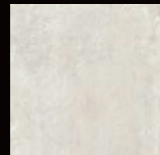
406009
OPUS STONE
AVORIO NATURALE
40,8x61,4 / 16,05"x24,15"
Cod. **70** □



406024
OPUS STONE
AVORIO NATURALE R11
40,8x61,4 / 16,05"x24,15"
Cod. **75** □



204006
OPUS STONE
AVORIO NATURALE
20,3x40,8 / 8"x16,05"
Cod. **78** □



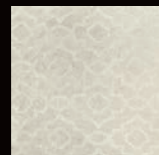
130071
OPUS STONE
AVORIO NATURALE
20,3x20,3 / 8"x8"
Cod. **96** □



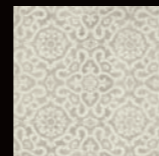
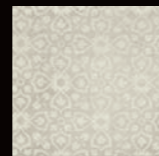
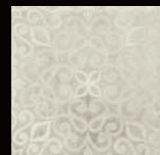
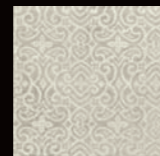
103108
OPUS STONE
AVORIO NATURALE
10,3x20,3 / 4,05"x8"
Cod. **88** □



041195
OPUS STONE
AVORIO NATURALE
MOSAICO 5x5
SU RETE 30x30 / 12"x12"
Cod. **26** ○



130077
OPUS STONE DECORO GRIGIO / AVORIO 20,3x20,3 / 8"x8"
Cod. **104** □



OPUS STONE



GRIGIO

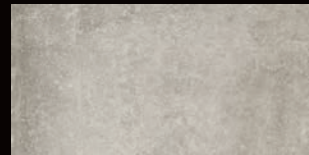


406018
OPUS STONE
GRIGIO NATURALE
40,8x61,4 / 16,05"x24,15"
Cod. **70** □



406033
OPUS STONE
GRIGIO NATURALE R11
40,8x61,4 / 16,05"x24,15"
Cod. **75** □

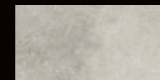
404012
OPUS STONE
GRIGIO NATURALE
40,8x40,8 / 16,05"x16,05"
Cod. **71** □



204009
OPUS STONE
GRIGIO NATURALE
20,3x40,8 / 8"x16,05"
Cod. **78** □



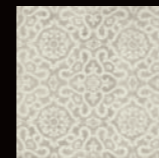
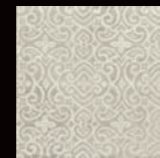
130074
OPUS STONE
GRIGIO NATURALE
20,3x20,3 / 8"x8"
Cod. **96** □



103111
OPUS STONE
GRIGIO NATURALE
10,3x20,3 / 4,05"x8"
Cod. **88** □



041198
OPUS STONE
GRIGIO NATURALE
MOSAICO 5x5
SU RETE 30x30 / 12"x12"
Cod. **26** ○



130077
OPUS STONE DECORO GRIGIO / AVORIO 20,3x20,3 / 8"x8"
Cod. **104** □

OPUS STONE



BEIGE

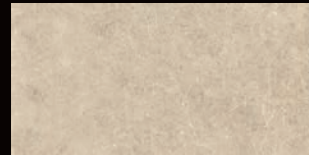


406012
OPUS STONE
BEIGE NATURALE
40,8x61,4 / 16,05"x24,15"
Cod. **70** □



406027
OPUS STONE
BEIGE NATURALE R11
40,8x61,4 / 16,05"x24,15"
Cod. **75** □

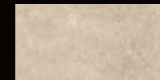
404010
OPUS STONE
BEIGE NATURALE
40,8x40,8 / 16,05"x16,05"
Cod. **71** □



204007
OPUS STONE
BEIGE NATURALE
20,3x40,8 / 8"x16,05"
Cod. **78** □



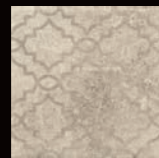
130072
OPUS STONE
BEIGE NATURALE
20,3x20,3 / 8"x8"
Cod. **96** □



103109
OPUS STONE
BEIGE NATURALE
10,3x20,3 / 4,05"x8"
Cod. **88** □



041196
OPUS STONE
BEIGE NATURALE
MOSAICO 5x5
SU RETE 30x30 / 12"x12"
Cod. **26** ○



130078
OPUS STONE DECORO BEIGE / TORTORA 20,3x20,3 / 8"x8"
Cod. **104** □

OPUS STONE



TORTORA

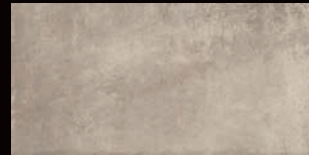


406021
OPUS STONE
TORTORA NATURALE
40,8x61,4 / 16,05"x24,15"
Cod. **70** □



406036
OPUS STONE
TORTORA NATURALE R11
40,8x61,4 / 16,05"x24,15"
Cod. **75** □

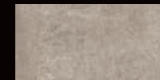
404013
OPUS STONE
TORTORA NATURALE
40,8x40,8 / 16,05"x16,05"
Cod. **71** □



204010
OPUS STONE
TORTORA NATURALE
20,3x40,8 / 8"x16,05"
Cod. **78** □



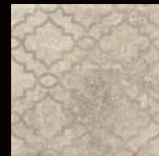
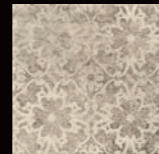
130075
OPUS STONE TORTORA
NATURALE
20,3x20,3 / 8"x8"
Cod. **96** □



103112
OPUS STONE
TORTORA NATURALE
10,3x20,3 / 4,05"x8"
Cod. **88** □



041199
OPUS STONE
TORTORA NATURALE
MOSAICO 5x5
SU RETE 30x30 / 12"x12"
Cod. **26** ○

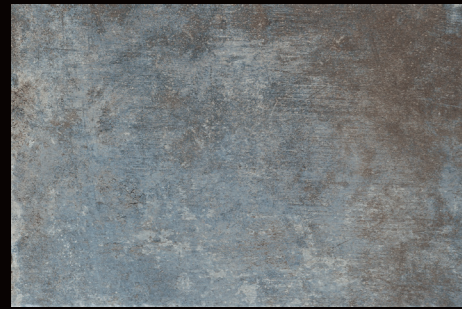


130078
OPUS STONE DECORO BEIGE / TORTORA
20,3x20,3 / 8"x8"
Cod. **104** □

OPUS STONE



BLU



406015
OPUS STONE
BLU NATURALE
40,8x61,4 / 16,05"x24,15"
Cod. **70** □



406030
OPUS STONE
BLU NATURALE R11
40,8x61,4 / 16,05"x24,15"
Cod. **75** □

404011
OPUS STONE
BLU NATURALE
40,8x40,8 / 16,05"x16,05"
Cod. **71** □



204008
OPUS STONE
BLU NATURALE
20,3x40,8 / 8"x16,05"
Cod. **78** □



130073
OPUS STONE BLU
NATURALE
20,3x20,3 / 8"x8"
Cod. **104** □



103110
OPUS STONE
BLU NATURALE
10,3x20,3 / 4,05"x8"
Cod. **88** □



041197
OPUS STONE
BLU NATURALE
MOSAICO 5x5
SU RETE 30x30 / 12"x12"
Cod. **26** ○



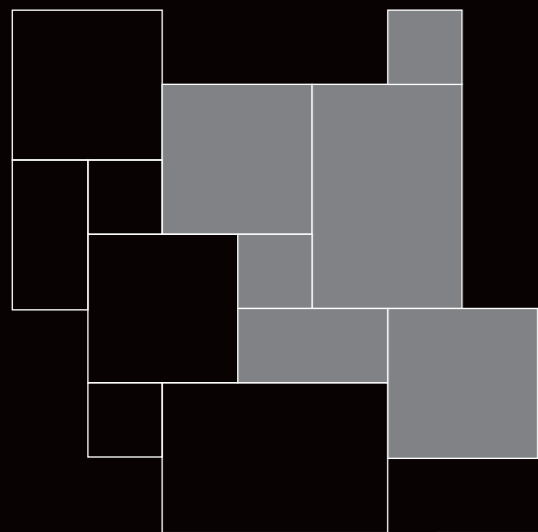
130076
OPUS STONE DECORO BLU
20,3x20,3 / 8"x8"
Cod. **104** □



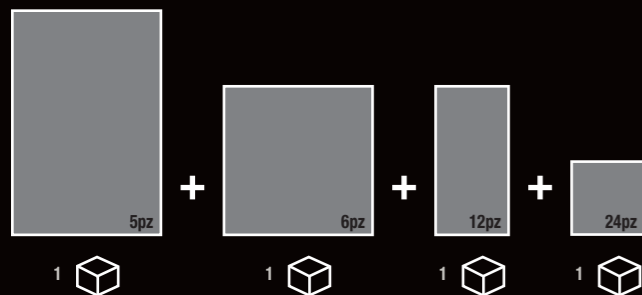
OPUS STONE



SUGGERIMENTI DI POSA • LAYING PROPOSALS • SOLUTIONS DE POSE • VERLEGEVORSCHÄGE



40,8 x 61,4....33,46 %
40,8 x 40,8....44,47 %
20,3 x 40,8....11,06 %
20,3 x 20,3....11,01 %



40,8 x 61,4....33,46 %
40,8 x 40,8....44,47 %
20,3 x 40,8....11,06 %
20,3 x 20,3....11,01 %

406040
OPUS STONE AVORIO NATURALE
MIX BOX
Cod. **120** □

406043
OPUS STONE GRIGIO NATURALE
MIX BOX
Cod. **120** □

406041
OPUS STONE BEIGE NATURALE
MIX BOX
Cod. **120** □

406039
OPUS STONE TORTORA NATURALE
MIX BOX
Cod. **120** □

406042
OPUS STONE BLU NATURALE
MIX BOX
Cod. **120** □

406048
OPUS STONE AVORIO NATURALE
MIX BOX **R11**
Cod. **79** □

406051
OPUS STONE GRIGIO NATURALE
MIX BOX **R11**
Cod. **79** □

406049
OPUS STONE BEIGE NATURALE
MIX BOX **R11**
Cod. **79** □

406047
OPUS STONE TORTORA NATURALE
MIX BOX **R11**
Cod. **79** □

406050
OPUS STONE BLU NATURALE
MIX BOX **R11**
Cod. **79** □

600162
OPUS STONE AVORIO
COMPO 1
Cod. **117** □

600165
OPUS STONE GRIGIO NATURALE
COMPO 1
Cod. **117** □

600163
OPUS STONE BEIGE NATURALE
COMPO 1
Cod. **117** □

600166
OPUS STONE TORTORA NATURALE
COMPO 1
Cod. **117** □

600164
OPUS STONE BLU NATURALE
COMPO 1
Cod. **117** □

Ceramica Gazzini S.p.A. garantisce l'abbinamento dei calibri per la posa in multiformato solo ed esclusivamente per il pattern qui raffigurato, mentre si solleva da ogni responsabilità qualora si adottasse uno schema di posa che si discosta da questo, in quanto potrebbe non assicurare un accostamento ottimale.

Ceramica Gazzini S.p.A. garantiert die Kombination der Kaliber für die Verlegung in Verband/Compo ausschließlich für das hier gezeigte Pattern. Ceramica Gazzini S.p.A. übernimmt keine Verantwortung, wenn andere Verlegungsschemen angewendet werden, da diese keine optimale Kombination gewährleisten könnten.

Caliber matching in multiformat laying is guaranteed by Ceramica Gazzini S.p.A. only and exclusively for the here shown pattern; Ceramica Gazzini S.p.A. is released from all liabilities in case of adoption of different patterns, as that does not ensure the optimal combination.

Ceramica Gazzini S.p.A. garantit la combinaison des calibres seulement pour le schéma multiformat indiqué sur le catalogue, Gazzini en aucun cas sera responsable de l'utilisation de schéma de pose différents.

PEZZI SPECIALI • SPECIAL TRIMS • PIÈCES SPÉCIALES • FORMSTÜCKE

□ = mq ○ = pz △ = ml

BATTISCOPIA



290728
OPUS STONE AVORIO BATTISCOPIA
6,2x40,8 / 2,45"x16,05"
Cod. **121** △

290731
OPUS STONE GRIGIO BATTISCOPIA
6,2x40,8 / 2,45"x16,05"
Cod. **121** △

290729
OPUS STONE BEIGE BATTISCOPIA
6,2x40,8 / 2,45"x16,05"
Cod. **121** △

290732
OPUS STONE TORTORA BATTISCOPIA
6,2x40,8 / 2,45"x16,05"
Cod. **121** △

290730
OPUS STONE BLU BATTISCOPIA
6,2x40,8 / 2,45"x16,05"
Cod. **121** △

LINEARE A ELLE



490651
OPUS STONE AVORIO LINEARE A ELLE
33x61,4 / 13,00"x24,15"
Cod. **111** ○

490654
OPUS STONE GRIGIO LINEARE A ELLE
33x61,4 / 13,00"x24,15"
Cod. **111** ○

490652
OPUS STONE BEIGE LINEARE A ELLE
33x61,4 / 13,00"x24,15"
Cod. **111** ○

490655
OPUS STONE TORTORA LINEARE A ELLE
33x61,4 / 13,00"x24,15"
Cod. **111** ○

490653
OPUS STONE BLU LINEARE A ELLE
33x61,4 / 13,00"x24,15"
Cod. **111** ○

ANGOLARE A ELLE



490656
OPUS STONE AVORIO ANGOLARE A ELLE
33x61,4 / 13,00"x24,15"
Cod. **112** ○

490659
OPUS STONE GRIGIO ANGOLARE A ELLE
33x61,4 / 13,00"x24,15"
Cod. **112** ○

490657
OPUS STONE BEIGE ANGOLARE A ELLE
33x61,4 / 13,00"x24,15"
Cod. **112** ○

490660
OPUS STONE TORTORA ANGOLARE A ELLE
33x61,4 / 13,00"x24,15"
Cod. **112** ○

490658
OPUS STONE BLU ANGOLARE A ELLE
33x61,4 / 13,00"x24,15"
Cod. **112** ○



CERAMICA GAZZINI E L'AMBIENTE

In accordo con la norma ISO 14022 "Environmental labels and declarations" si dichiara che: L'azienda è impegnata nella continua innovazione tecnologica dei propri processi per realizzare prodotti sempre più rispondenti alle richieste del mercato e nell'ottica di:

- riduzione del consumo energetico dei processi di produzione;
 - riduzione delle emissioni nell'aria e nell'acqua;
 - miglioramento dell'informazione al consumatore e della gestione dei rifiuti.
- Per limitare il proprio impatto ambientale CERAMICA GAZZINI S.p.A. opera come di seguito descritto:
- gli scarti di lavorazione sono completamente gestiti e riutilizzati;
 - tutti gli stabilimenti produttivi sono dotati di impianto di depurazione delle acque a circuito chiuso con recupero totale degli scarichi idrici provenienti dal ciclo produttivo e nessuno scarico in ambiente;
 - le emissioni gassose sono autorizzate dall'autorità competente, dotate di impianti per l'abbattimento degli inquinanti e sottoposte a controllo periodico per verifica del rispetto della legislazione vigente;
 - i rifiuti industriali sono smaltiti in conformità alle direttive comunitarie;
 - gli imballaggi sono destinati al recupero e riutilizzo;
 - l'impatto acustico nell'ambiente è attenuato con l'utilizzo di tecnologie idonee.

Le piastrelle ceramiche prodotte sono:

- un prodotto con una lunga durata di vita
- riciclabili al termine dell'utilizzo

CERAMICA GAZZINI AND THE ENVIRONMENT

In line with the ISO 14021 standard "Environmental labels and declarations" we declare that: The company is committed to the continued technological innovation of its processes to create products that increasingly meet the demands of the market and focus on:

- reduced energy consumption in production processes;
 - reduced emissions into the air and water;
 - improving consumer awareness and waste management.
- To curb its environmental impact, CERAMICA GAZZINI S.p.A. has taken the following steps:
- manufacturing rejects are fully managed and reused;
 - all the production units are equipped with a closed-circuit water purification plant with total recovery of liquid discharges coming from the production cycle and no discharges into the environment;
 - emissions of gases are authorised by the competent authority, pollutant abatement systems are fitted and undergo periodic checks to verify they comply with the current laws;
 - industrial waste is disposed of in compliance with the community directives;
 - packaging is sent off to be recycled and reused;
 - the acoustic impact on the environment is toned down via the use of suitable technologies.

The ceramic tiles produced are:

- a long-lasting product
- recyclable at the end of their use

Decoro GRIGIO / AVORIO

OPUS STONE

Decoro BEIGE / TORTORA

OPUS STONE



I decori 20,3x20,3 sono imballati "random" e non sono acquistabili selezionando singoli motivi fra i 12 che compongono il "pattern".

The 20,3x20,3 decorations are packed "random" and cannot be purchased by selecting single faces among the 12 that make up the "pattern".

Die 12 Dekore 20,3x20,3 werden "random" verpackt und einzelne Motive, aus denen das „Pattern“ besteht, können nicht gekauft werden.

Les décorations 20,3x20,3 sont emballées "de manière aléatoire" et ne peuvent pas être achetées en sélectionnant des motifs uniques parmi les 12 constituant le "motif".

I decori 20,3x20,3 sono imballati "random" e non sono acquistabili selezionando singoli motivi fra i 12 che compongono il "pattern".

The 20,3x20,3 decorations are packed "random" and cannot be purchased by selecting single faces among the 12 that make up the "pattern".

Die 12 Dekore 20,3x20,3 werden "random" verpackt und einzelne Motive, aus denen das „Pattern“ besteht, können nicht gekauft werden.

Les décorations 20,3x20,3 sont emballées "de manière aléatoire" et ne peuvent pas être achetées en sélectionnant des motifs uniques parmi les 12 constituant le "motif".



I decori 20,3x20,3 sono imballati "random" e non sono acquistabili selezionando singoli motivi fra i 12 che compongono il "pattern".

The 20,3x20,3 decorations are packed "random" and cannot be purchased by selecting single faces among the 12 that make up the "pattern".

Die 12 Dekore 20,3x20,3 werden "random" verpackt und einzelne Motive, aus denen das „Pattern“ besteht, können nicht gekauft werden.











Les décorations 20,3x20,3 sont emballées "de manière aléatoire" et ne peuvent pas être achetées en sélectionnant des motifs uniques parmi les 12 constituant le "motif".


CARATTERISTICHE DI QUALITÀ
QUALITY CHARACTERISTICS
CARACTÉRISTIQUES DE QUALITÉ
QUALITÄTSEIGENSCHAFTEN

NORMA
NORM
NORME
NORME


REQUISITO NORMA
REQUIRED STANDARDS
VALEUR PRESCRITE SELON LA NORME
NORMVORGABE


RISULTATO
RESULT
RESULTAT
ERGEBNISS

	Assorbimento d'acqua Water absorption of the body Absorption d'eau de support Wasseraufnahme des Scherbens	ISO 10545-3	≤ 0,5	Conforme Conformity Conforme Gemäss
	Resistenza a flessione Breaking strenght Résistance à la flexion Biegefestigkeit	ISO 10545-4	≥ 35 N/mm ²	Conforme Conformity Conforme Gemäss
	Resistenza al gelo Frost resistance Résistance au gel Frostbeständigkeit	ISO 10545-12	Nessun campione deve presentare rotture o alterazioni apprezzabili alla superficie No samples must show ruptures or noticeable surface alteration Aucuns enchantions doit présenter ruptures ou altérations appréciables de la surface Keines der Muster sollte Risse oder sichtbare Fehler der Oberflaeche zeigen	Conforme Conformity Conforme Gemäss
	Resistenza all'attacco chimico Chemical resistance Résistance à l'attaque chimique Beständigkeit gegen Chemikalien	ISO 10545-13		GA GLA
	Resistenza agli sbalzi termici Thermal shock resistance Resistance aux ecarts de température Temperaturwechselbeständigkeit	ISO 10545-5		Conforme Conformity Conforme Gemäss
	Resistenza all'abrasione Abrasion resistance Resistance a l'abrasion Abriebbestaendigkeit	EN ISO 10545-7		PEI V
	Resistenza all'abrasione Abrasion resistance Resistance a l'abrasion Abriebbestaendigkeit	DIN 51130 R	OPUS STONE NATURALE OPUS STONE NATURALE R11	R10 R11
	Resistenza scivolosità Sliding resistance Resistance au glissement Rutschfestigkeit	DIN 51097 R (A+B+C)	OPUS STONE NATURALE OPUS STONE NATURALE R11	A+B A+B+C
	Coefficiente d'attrito dinamico Wet dynamic coefficient of friction Coefficient de friction dynamique Reibungskoeffizient schlüprigkeit (in bewegung)	Boot 3000 E	DCOF ≥ 0,42	> 0,42
	Moderata Variazione Moderate Variation Variation modérée maessige Abweichung			V3

 V1
Aspetto uniforme
Uniform appearance
Aspect uniforme
einheitliches Aussehen

 V2
Lieve Variazione
Slight Variation
Légère Variation
geringe Abweichung

 V3
Moderata Variazione
Moderate Variation
Variation modérée
maessige Abweichung

 V4
Forte stonizzazione
Substantial Variation
Effet dénuancé très accentué
akzentuierte Variation

PER UNA POSA OTTIMALE DEL PRODOTTO CONSIGLIAMO SEMPRE DI MESCOLARE ALMENO TRE SCATOLE DI MATERIALE.
For the best product laying results, material from at least three boxes should be mixed.
Für eine optimale Verlegung des Erzeugnisses empfehlen wir stets, mindestens drei Packungen Material anzumischen.
Pour une pose excellente, nous recommandons toujours de mélanger le contenu d'au moins trois boîtes.

MADE IN ITALY



GAZZINI
CERAMICA & DESIGN

Ceramica Gazzini SpA - via Milano, 2 - 42048 Rubiera (Reggio Emilia) Italy
Tel. 0522 628112 - 627518 - 628639 - Fax 0522 628437
info@ceramicagazzini.it - www.ceramicagazzini.it

C.F. E P.I. 00140380353 - REG. IMP. REGGIO EMILIA N° 00140380353
CAPITALE SOCIALE I.V. € 546.000,00