

FACTORY

GAZZINI
CERAMICA & DESIGN

WHITE





WHITE 100x100 rett.



WHITE 30x60 ret. + 10x30 ret. + 26x30 mosaico esagono + 5x30 listello metal

GREY





GREY 60x120 rett. + 30x60 rett. + 2,5x7,5 mosaico metal su rete 30x30

SMOKE





SMOKE 100x100 rett.

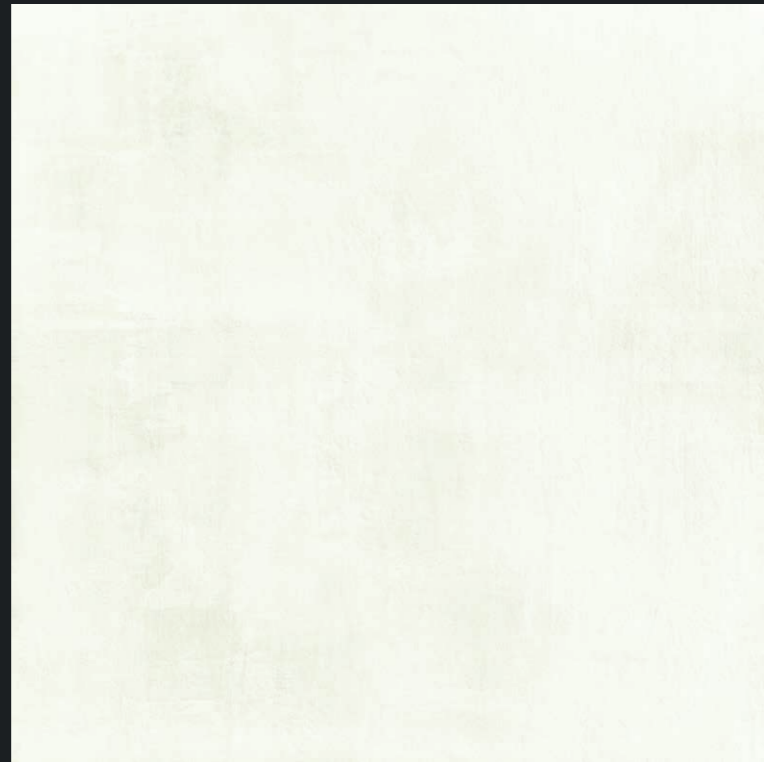
BLACK



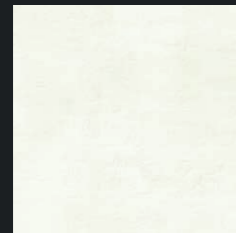


BLACK 60x60 rett. + 30x60 rett. + gradino 33x60

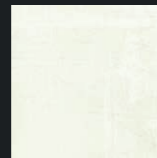
WHITE



101001
FACTORY WHITE RETT. 100x100 / 40"x40"
COD.100 □



41107
FACTORY WHITE RETT. 30x30 / 12"x12"
COD.78 □



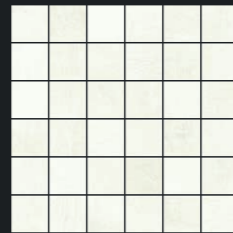
130053
FACTORY WHITE RETT. 20x20 / 8"x8"
COD.120 □



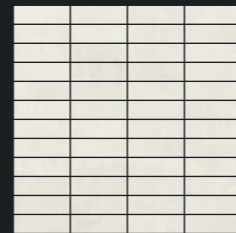
103098
FACTORY WHITE RETT. 10x30 / 4"x12"
COD.77 □



41111
FACTORY WHITE MOSAICO ESAGONO
26x30 / 10"x12"
COD.128 ○



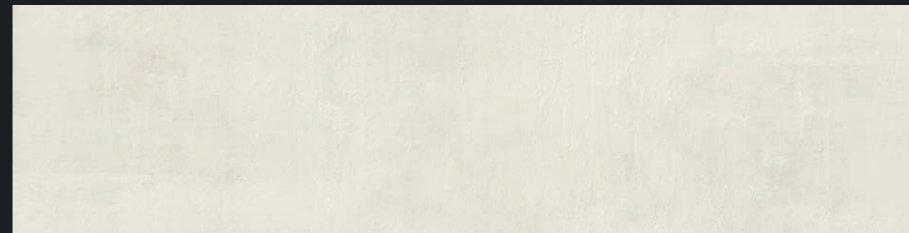
41115
FACTORY WHITE MOSAICO
5x5 su rete 30x30 / 12"x12"
COD.24 ○



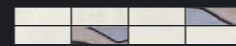
41154
FACTORY WHITE MOSAICO
2,5x7,5 su rete 30x30 / 12"x12"
COD.24 ○



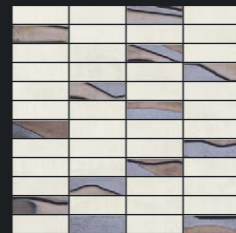
601253
FACTORY WHITE RETT. 60x120 / 24"x48"
COD.94 □



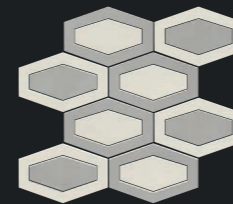
301248
FACTORY WHITE RETT. 30x120 / 12"x48"
COD.99 □



380262
FACTORY WHITE LISTELLO METAL 5x30 / 2"x12"
COD. 4 ○



41158
FACTORY WHITE MOSAICO METAL
2,5x 7,5 su rete 30x30 / 12"x12"
COD.38 ○



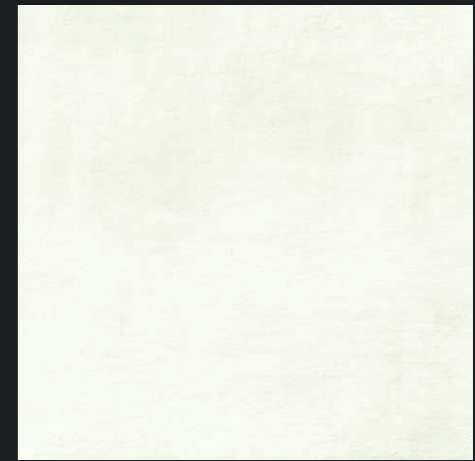
41168
FACTORY WHITE/GREY MOSAICO CITIZEN
26,1x26,1 / 10"x10"
COD.38 ○



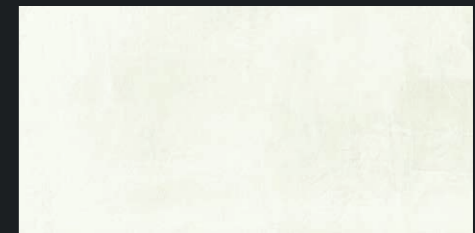
41169
FACTORY WHITE/SMOKE MOSAICO CITIZEN
26,1x26,1 / 10"x10"
COD.38 ○



41170
FACTORY WHITE/BLACK MOSAICO CITIZEN
26,1x26,1 / 10"x10"
COD.38 ○

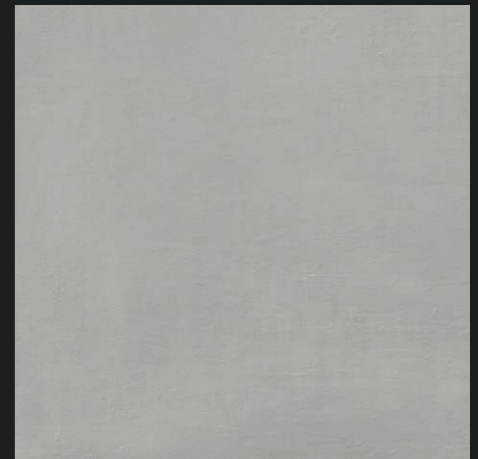
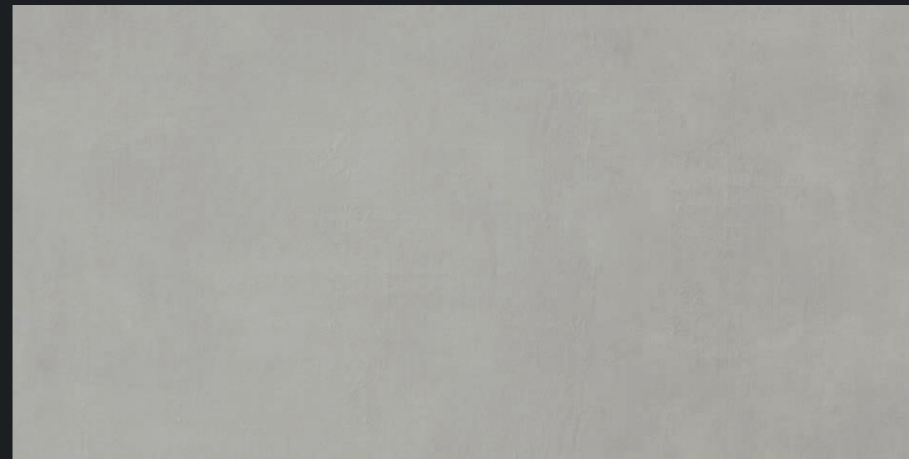
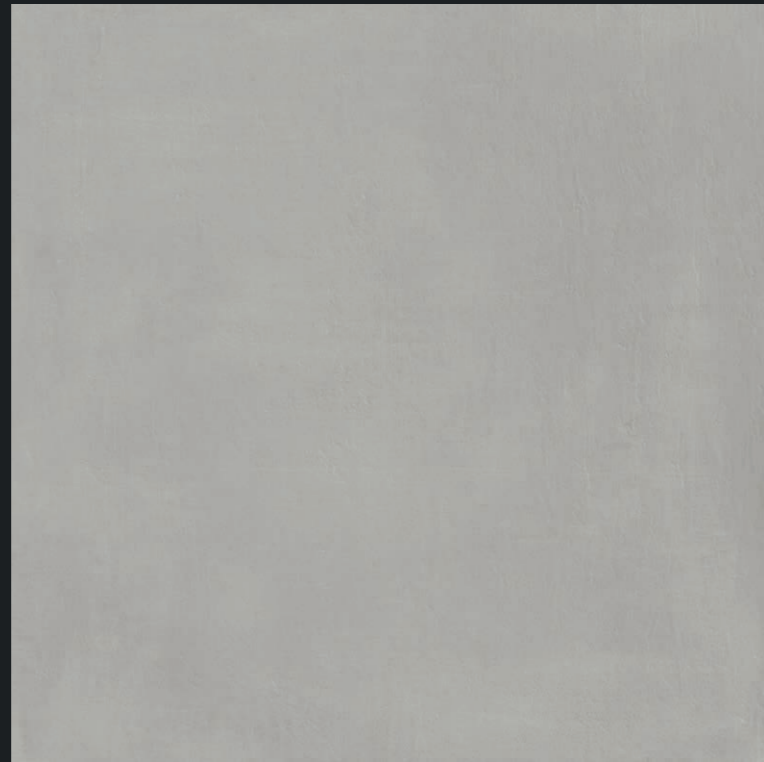


606197
FACTORY WHITE RETT. 60x60 / 24"x24"
COD.79 □



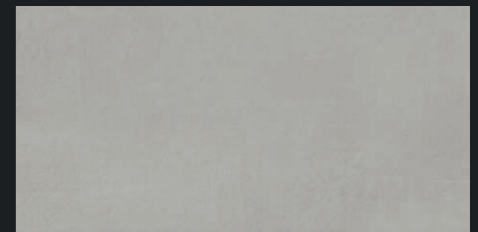
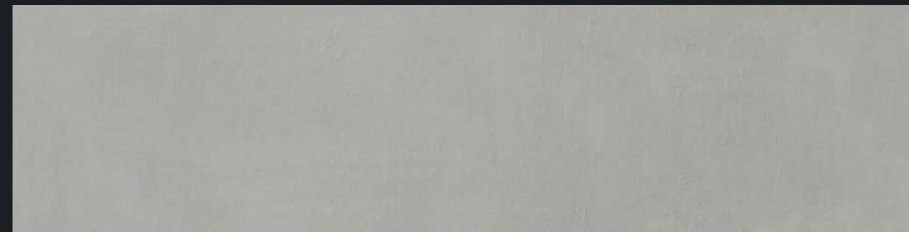
490600
FACTORY WHITE RETT. 30x60 / 12"x24"
COD.76 □

GREY



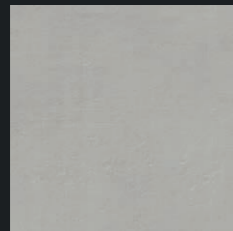
601254
FACTORY GREY RETT. 60x120 / 24"x48"
COD.94 □

606198
FACTORY GREY RETT. 60x60 / 24"x24"
COD.79 □

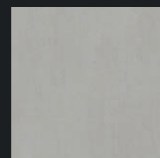


301249
FACTORY GREY RETT. 30x120 / 12"x48"
COD.99 □

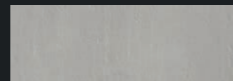
490601
FACTORY GREY RETT. 30x60 / 12"x24"
COD.76 □



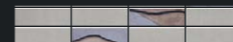
101002
FACTORY GREY RETT. 100x100 / 40"x40"
COD.100 □



130054
FACTORY GREY RETT. 20x20 / 8"x8"
COD.120 □

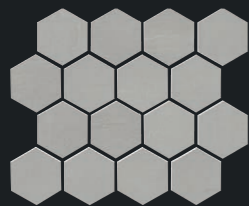


103099
FACTORY GREY RETT. 10x30 / 4"x12"
COD.77 □



380263
FACTORY GREY LISTELLO METAL 5x30 / 2"x12"
COD. 4 ○

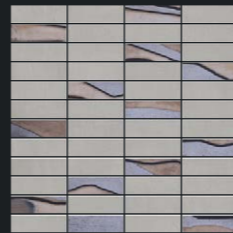
41108
FACTORY GREY RETT. 30x30 / 12"x12"
COD.78 □



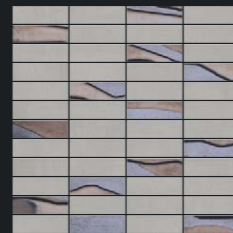
41112
FACTORY GREY MOSAICO ESAGONO
26x30 / 10"x12"
COD.128 ○



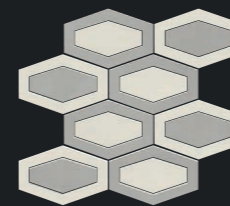
41116
FACTORY GREY MOSAICO
5x5 su rete 30x30 / 12"x12"
COD.24 ○



41155
FACTORY GREY MOSAICO
2,5x7,5 su rete 30x30 / 12"x12"
COD.24 ○



41159
FACTORY GREY MOSAICO METAL
2,5x 7,5 su rete 30x30 / 12"x12"
COD.38 ○



41168
FACTORY WHITE/GREY MOSAICO CITIZEN
26,1x26,1 / 10"x10"
COD.38 ○

SMOKE



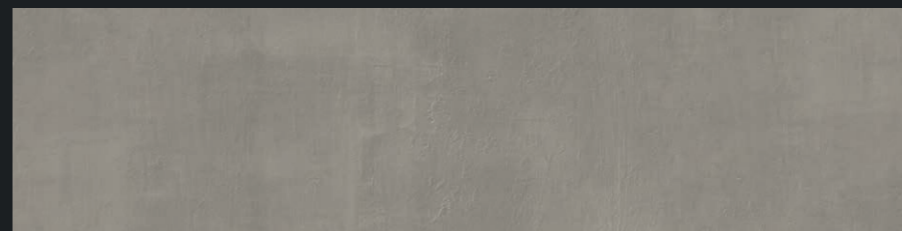
101003
FACTORY SMOKE RETT. 100x100 / 40"x40"
COD.100 □



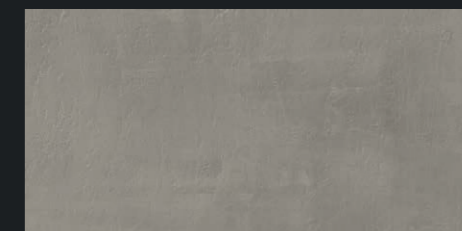
601255
FACTORY SMOKE RETT. 60x120 / 24"x48"
COD.94 □



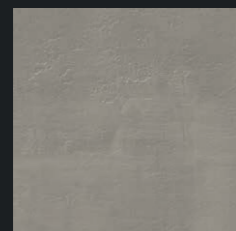
606199
FACTORY SMOKE RETT. 60x60 / 24"x24"
COD.79 □



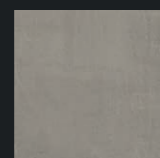
301250
FACTORY SMOKE RETT. 30x120 / 12"x48"
COD.99 □



490602
FACTORY SMOKE RETT. 30x60 / 12"x24"
COD.76 □



41109
FACTORY SMOKE RETT. 30x30 / 12"x12"
COD.78 □



130055
FACTORY SMOKE RETT. 20x20 / 8"x8"
COD.120 □



103100
FACTORY SMOKE RETT. 10x30 / 4"x12"
COD.77 □



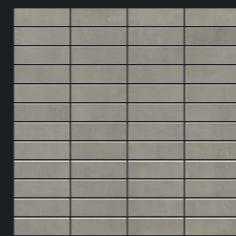
380264
FACTORY SMOKE LISTELLO METAL 5x30 / 2"x12"
COD. 4 ○



41113
FACTORY SMOKE MOSAICO ESAGONO
26x30 / 10"x12"
COD.128 ○



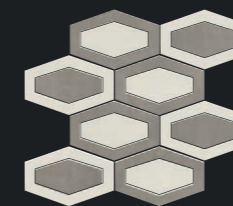
41117
FACTORY SMOKE MOSAICO
5x5 su rete 30x30 / 12"x12"
COD.24 ○



41156
FACTORY SMOKE MOSAICO
2,5x7,5 su rete 30x30 / 12"x12"
COD.24 ○

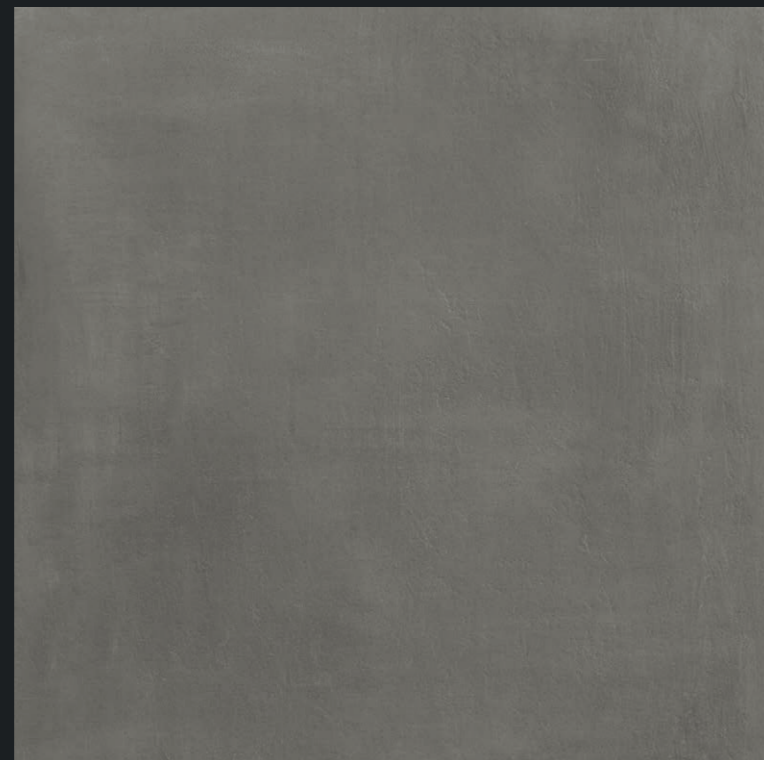


41160
FACTORY SMOKE MOSAICO METAL
2,5x 7,5 su rete 30x30 / 12"x12"
COD.38 ○

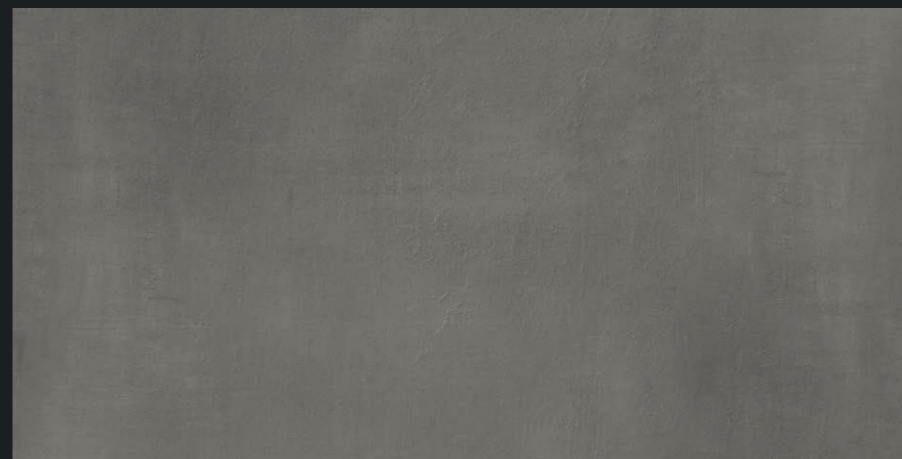


41169
FACTORY WHITE/SMOKE MOSAICO CITIZEN
26,1x26,1 / 10"x10"
COD.38 ○

BLACK



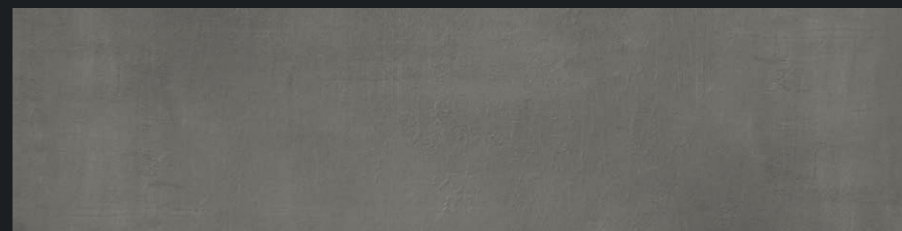
101004
FACTORY BLACK RETT. 100x100 / 40"x40"
COD.100 □



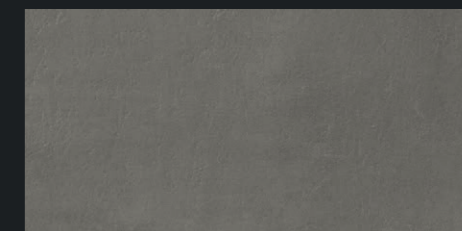
601256
FACTORY BLACK RETT. 60x120 / 24"x48"
COD.94 □



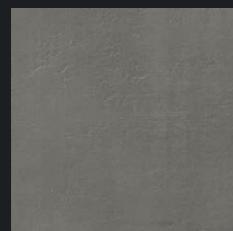
606200
FACTORY BLACK RETT. 60x60 / 24"x24"
COD.79 □



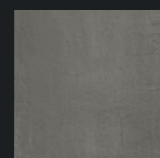
301251
FACTORY BLACK RETT. 30x120 / 12"x48"
COD.99 □



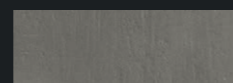
490603
FACTORY BLACK RETT. 30x60 / 12"x24"
COD.76 □



41110
FACTORY BLACK RETT. 30x30 / 12"x12"
COD.78 □



130056
FACTORY BLACK RETT. 20x20 / 8"x8"
COD.120 □



103101
FACTORY BLACK RETT. 10x30 / 4"x12"
COD.77 □



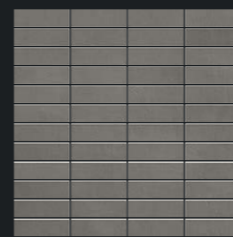
380265
FACTORY BLACK LISTELLO METAL 5x30 / 2"x12"
COD. 4 ○



41114
FACTORY BLACK MOSAICO ESAGONO
26x30 / 10"x12"
COD.128 ○



41118
FACTORY BLACK MOSAICO
5x5 su rete 30x30 / 12"x12"
COD.24 ○



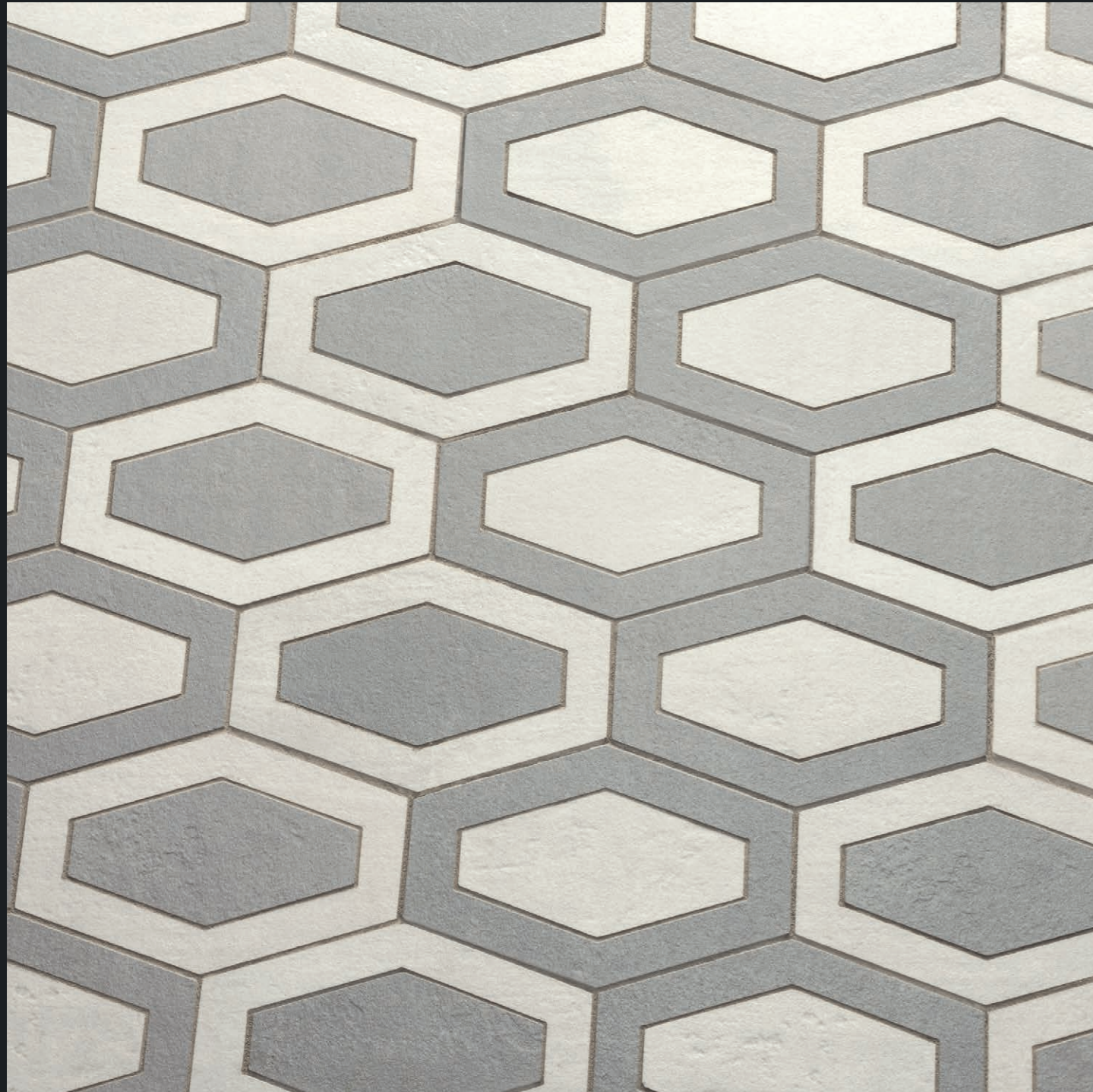
41157
FACTORY BLACK MOSAICO
2,5x7,5 su rete 30x30 / 12"x12"
COD.24 ○



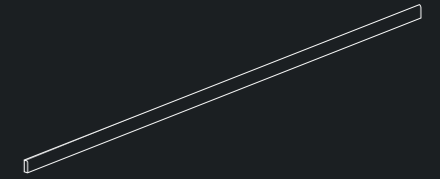
41161
FACTORY BLACK MOSAICO METAL
2,5x 7,5 su rete 30x30 / 12"x12"
COD.38 ○



41170
FACTORY WHITE/BLACK MOSAICO CITIZEN
26,1x26,1 / 10"x10"
COD.38 ○



BATTISCOPIA



290715
FACTORY WHITE BATTISCOPIA 5x60
COD.121 △

290719
FACTORY WHITE BATTISCOPIA 5x100
COD.33 △

290716
FACTORY GREY BATTISCOPIA 5x60
COD.121 △

290720
FACTORY GREY BATTISCOPIA 5x100
COD.33 △

290717
FACTORY SMOKE BATTISCOPIA 5x60
COD.121 △

290721
FACTORY SMOKE BATTISCOPIA 5x100
COD.33 △

290718
FACTORY BLACK BATTISCOPIA 5x60
COD.121 △

290722
FACTORY BLACK BATTISCOPIA 5x100
COD.33 △

GRADINO



490618
FACTORY WHITE GRADINO ANGOLARE 33x60
COD.112 ○

490622
FACTORY WHITE GRADINO ANGOLARE 33x120
COD.114 ○

490616
FACTORY GREY GRADINO ANGOLARE 33x60
COD.112 ○

490620
FACTORY GREY GRADINO ANGOLARE 33x120
COD.114 ○

490617
FACTORY SMOKE GRADINO ANGOLARE 33x60
COD.112 ○

490621
FACTORY SMOKE GRADINO ANGOLARE 33x120
COD.114 ○

490615
FACTORY BLACK GRADINO ANGOLARE 33x60
COD.112 ○

490619
FACTORY BLACK GRADINO ANGOLARE 33x120
COD.114 ○

BATTISCOPA



290715
FACTORY WHITE BATTISCOPA 5x60
COD.121 ▲

290716
FACTORY GREY BATTISCOPA 5x60
COD.121 ▲

290717
FACTORY SMOKE BATTISCOPA 5x60
COD.121 ▲

290718
FACTORY BLACK BATTISCOPA 5x60
COD.121 ▲

290719
FACTORY WHITE BATTISCOPA 5x100
COD.33 ▲

290720
FACTORY GREY BATTISCOPA 5x100
COD.33 ▲

290721
FACTORY SMOKE BATTISCOPA 5x100
COD.33 ▲

290722
FACTORY BLACK BATTISCOPA 5x100
COD.33 ▲



CERAMICA GAZZINI E L'AMBIENTE

In accordo con la norma ISO 1402 "Environmental labels and declarations" si dichiara che:

L'azienda è impegnata nella continua innovazione tecnologica dei propri processi per realizzare prodotti sempre più rispondenti alle richieste del mercato e nell'ottica di:

- riduzione del consumo energetico dei processi di produzione;
- riduzione delle emissioni nell'aria e nell'acqua;
- miglioramento dell'informazione al consumatore e della gestione dei rifiuti.

Per limitare il proprio impatto ambientale CERAMICA GAZZINI S.p.A. opera come di seguito descritto:

- gli scarti di lavorazione sono completamente gestiti e riutilizzati;
 - tutti gli stabilimenti produttivi sono dotati di impianto di depurazione delle acque a circuito chiuso con recupero totale degli scarichi idrici provenienti dal ciclo produttivo e nessuno scarico in ambiente;
 - le emissioni gassose sono autorizzate dall'autorità competente, dotate di impianti per l'abbattimento degli inquinanti e sottoposte a controllo periodico per verifica del rispetto della legislazione vigente;
 - i rifiuti industriali sono smaltiti in conformità alle direttive comunitarie;
 - gli imballaggi sono destinati al recupero e riutilizzo;
 - l'impatto acustico nell'ambiente è attenuato con l'utilizzo di tecnologie idonee.
- Le piastrelle ceramiche prodotte sono:
- un prodotto con una lunga durata di vita
 - riciclabili al termine dell'utilizzo

CERAMICA GAZZINI AND THE ENVIRONMENT

In line with the ISO 14021 standard "Environmental labels and declarations" we declare that:

The company is committed to the continued technological innovation of its processes to create products that increasingly meet the demands of the market and focus on:

- reduced energy consumption in production processes;
- reduced emissions into the air and water;
- improving consumer awareness and waste management.

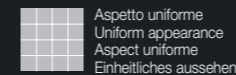
To curb its environmental impact, CERAMICA GAZZINI S.p.A. has taken the following steps:

- manufacturing rejects are fully managed and reused;
- all the production units are equipped with a closed-circuit water purification plant with total recovery of liquid discharges coming from the production cycle and no discharges into the environment;
- emissions of gases are authorised by the competent authority, pollutant abatement systems are fitted and undergo periodic checks to verify they comply with the current laws;
- industrial waste is disposed of in compliance with the community directives;
- packaging is sent off to be recycled and reused;
- the acoustic impact on the environment is toned down via the use of suitable technologies.

The ceramic tiles produced are:

- a long-lasting product
- recyclable at the end of their use

CARATTERISTICHE DI QUALITÀ Quality characteristics Caractéristiques de qualité Qualitätseigenschaften	NORMA Norm Norme Norme	REQUISITO NORMA Required standards Valeur prescrite selon la norme Normvorgabe	RISULTATO Result Résultat Ergebniss
Assorbimento d'acqua Water absorption of the body Absorption d'eau de support Wasseraufnahme des scherbens	ISO 10545-3	≤ 0,5	Conforme Conformity Conforme Gemäss
Resistenza a flessione Breaking strenght Résistance à la flexion Biegefestigkeit	ISO 10545-4	≥ 35 N/mm²	Conforme Conformity Conforme Gemäss
Resistenza all'abrasione Abrasion resistance Resistance a l'abrasion Abriebbestaendigkeit	EN ISO 10545-7		PEI V
Resistenza al gelo Frost resistance Résistance au gel Frostbeständigkeit	ISO 10545-12	Nessun campione deve presentare rotture o alterazioni apprezzabili alla superficie No samples must show ruptures or noticeable surface alteration Aucuns enchantions doit présenter ruptures ou alterations appréciables de la surface Keines der Muster sollte Risse oder sichtbare Fehler der Oberflaeche zeigen	Conforme Conformity Conforme Gemäss
Resistenza all'attacco chimico Chemical resistance Résistance à l'attaque chimique Beständigkeit gegen chemikalien	ISO 10545-13	Nessun campione deve presentare alterazioni visibili all'attacco chimico No samples must show visible signs of chemical attack Aucuns enchantions doit présenter des alterations visibles à l'attaque chimique Keines der Muster sollte sehenswerte Aenderungen nach Behandlung mit Chemikalien zeigen	Conforme Conformity Conforme Gemäss
Resistenza agli sbalzi termici Thermal shock resistance Resistance aux ecart de température Temperaturwechselbeständigkeit	ISO 10545-5		Conforme Conformity Conforme Gemäss
Resistenza scivolosità Sliding resistance Resistance au glissement Rutschfestigkeit	DIN 51130 R		R10
Resistenza scivolosità Sliding resistance Resistance au glissement Rutschfestigkeit	DIN 51097 (A+B)		A+B
Coefficiente d'attrito dinamico Wet dynamic coefficient of friction Coefficient de friction dynamique Reibungskoeffizient schlüpfrigkeit (in bewegung)	Bot 3000 E	DCOF ≥ 0,42	> 0,42
Moderata variazione Moderate variation Variation modérée Maessige abweichung			V2



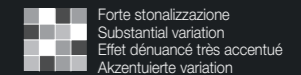
V1



V2



V3



V4

PER UNA POSA OTTIMALE DEL PRODOTTO CONSIGLIAMO SEMPRE DI MESCOLARE ALMENO TRE SCATOLE DI MATERIALE.

For the best product laying results, material from at least three boxes should be mixed.

Für eine optimale Verlegung des Erzeugnisses empfehlen wir stets, mindestens drei Packungen Material anzumischen.

Pour une pose excellente, nous recommandons toujours de mélanger le contenu d'au moins trois boîtes.

MADE IN ITALY



GAZZINI
CERAMICA & DESIGN

Ceramica Gazzini SpA - via Milano, 2 - 42048 Rubiera (Reggio Emilia) Italy
Tel. 0522 628112 - 627518 - 628639 - Fax 0522 628437
info@ceramicagazzini.it - www.ceramicagazzini.it

C.F. E P.I. 00140380353 - REG. IMP. REGGIO EMILIA N° 00140380353
CAPITALE SOCIALE I.V. € 546.000,00